



AQUINNA HOMES

# WILTON GROVE

AMERSHAM ROAD | BEACONSFIELD | BUCKINGHAMSHIRE | HP9 2EJ

AN EXCLUSIVE DEVELOPMENT OF JUST THREE EXCEPTIONAL TWO-BEDROOM NEWBUILD APARTMENTS,  
WITH OFF-STREET PARKING, SITUATED IN THE DESIRABLE HISTORICAL TOWN OF BEACONSFIELD.

[WWW.AQUINNAHOMES.COM](http://WWW.AQUINNAHOMES.COM)





AQUINNA HOMES ARE PROUD TO PRESENT  
THIS COLLECTION OF JUST THREE  
NEWBUILD APARTMENTS IN EXCLUSIVE  
BEACONSFIELD, BUCKINGHAMSHIRE.

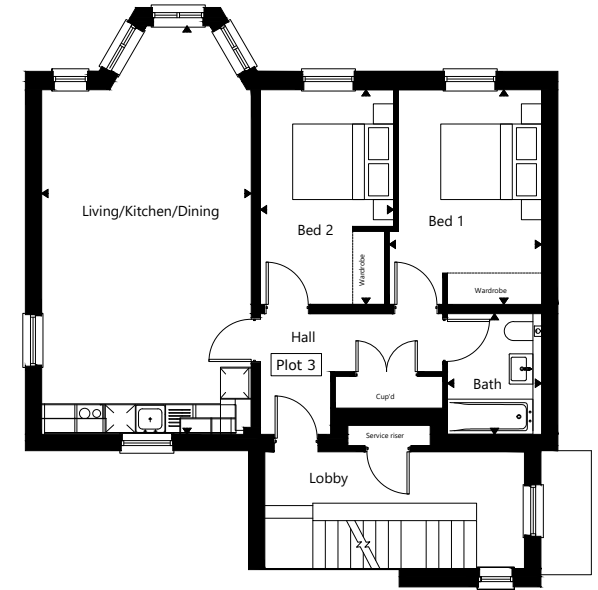
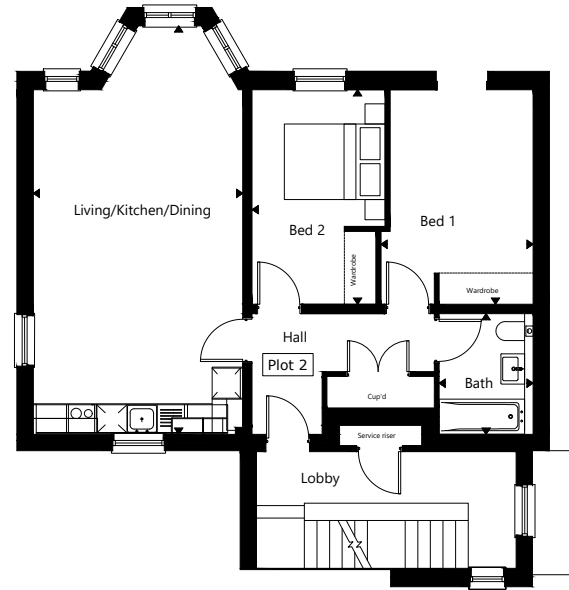
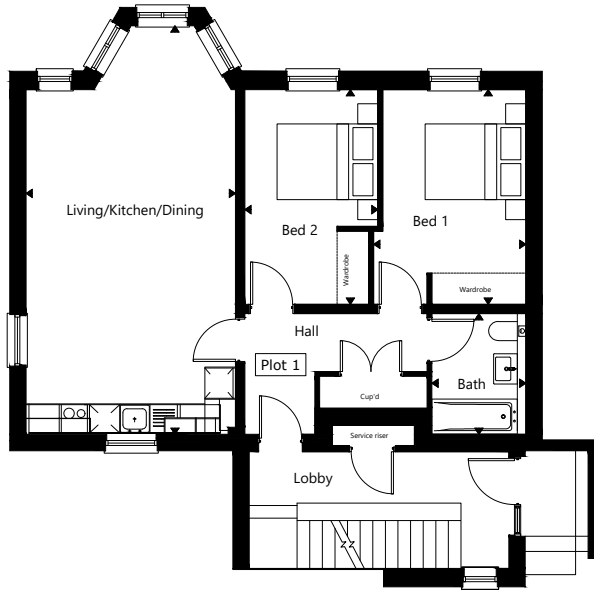
Situated to the rear of the newly refurbished and existing apartments at Wilton Hollow, these three newbuild apartments have been sympathetically built in keeping with the current building.

Located between the old and the new towns of Beaconsfield, the apartments are within walking distance of the mainline station to London Marylebone, local services and facilities, such as bars, restaurants and shops including two major supermarkets.



# PLOTS 1, 2 & 3 - WILTON GROVE ROOM LAYOUTS

Floor plans are for illustration purposes only and may be subject to change.  
Furnishings not included.



## Plot 1

	m	ft
Living/Kitchen/Dining	8.11 x 4.16	26'7" x 13'8"
Bedroom 1	4.26 x 3.03	14'0" x 9'11"
Bedroom 2	4.26 x 2.64	14'0" x 8'8"
WC	2.39 x 1.86	7'10" x 6'1"

## Plot 2

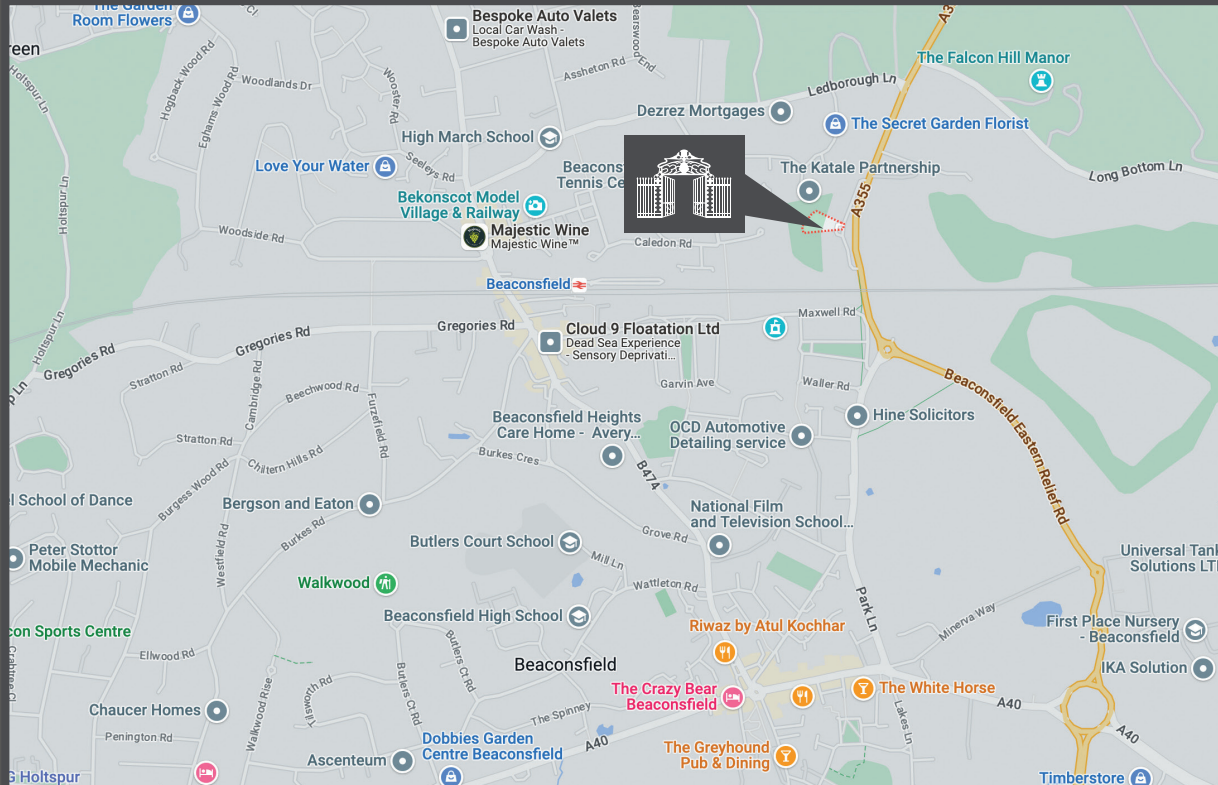
	m	ft
Living/Kitchen/Dining	8.11 x 4.16	26'7" x 13'8"
Bedroom 1	4.26 x 3.03	14'0" x 9'11"
Bedroom 2	4.26 x 2.64	14'0" x 8'8"
WC	2.39 x 1.86	7'10" x 6'1"

## Plot 3

	m	ft
Living/Kitchen/Dining	8.11 x 4.16	26'7" x 13'8"
Bedroom 1	4.26 x 3.03	14'0" x 9'11"
Bedroom 2	4.26 x 2.64	14'0" x 8'8"
WC	2.39 x 1.86	7'10" x 6'1"

Plots 1-3 total area - 691.1m<sup>2</sup>/ 743.8ft<sup>2</sup>





AMERSHAM ROAD | BEAONSFIELD | BUCKS | HP9 2EJ

Map data © 2023 Google

SELLING AGENT

**BOVINGDONS**

**TIM RUSS**  
& COMPANY

01494 677 733

Email: [beaconsfield@bovingdons.com](mailto:beaconsfield@bovingdons.com)

01494 681 122

Email: [beaconsfield@timruss.co.uk](mailto:beaconsfield@timruss.co.uk)



**AQUINNA HOMES**  
*aspire...*

01494 739 400

[WWW.AQUINNAHOMES.COM](http://WWW.AQUINNAHOMES.COM)

Aquinna Homes plc is an experienced and well funded homebuilder founded in 2004. We are committed to creating high quality aspirational homes in the very best locations throughout London and the South-East. Our portfolio includes luxurious city apartments, delightful village mews, signature buildings inspired by renowned architects and substantial family homes. You are in safe hands with our experienced team of professionals who take pride in creating beautiful homes of outstanding quality, each with the Aquinna hallmark of attention to detail.

Aquinna Homes plc, Award Winning Developers

**Aquinna Homes plc**  
Best House Building Company  
South East England

**BUILD**

winner   
2022 Home Builder  
Awards

UNITED KINGDOM  
**PROPERTY  
AWARDS**  
WINNER 2020-2021



**Disclaimer:** Artist's perspectives, plans and diagrams used in this brochure are intended to be a general guide to the appearance of the development. However it is necessary from time to time for us to make architectural changes, therefore prospective purchasers are advised to check the latest plans with our sales consultants. Due to our policy of continual improvement, we reserve the right to vary the specification as and when it may become necessary. Whilst all statements contained in this brochure are believed to be correct, they are not regarded as statements or representations of fact and neither the Agents nor their clients guarantee their accuracy. The statements are not intended to form any part of an offer or a contract. The postcode shown may not be consistent with the new postal address. Autumn 2023.